



Promoting Cooperative Solutions for Space Sustainability

The Foundational Role of Space Situational Awareness (SSA)

Brian Weeden
Technical Advisor
Secure World Foundation

©2011 Secure World Foundation. Used with Permission



Promoting Cooperative Solutions for Space Sustainability

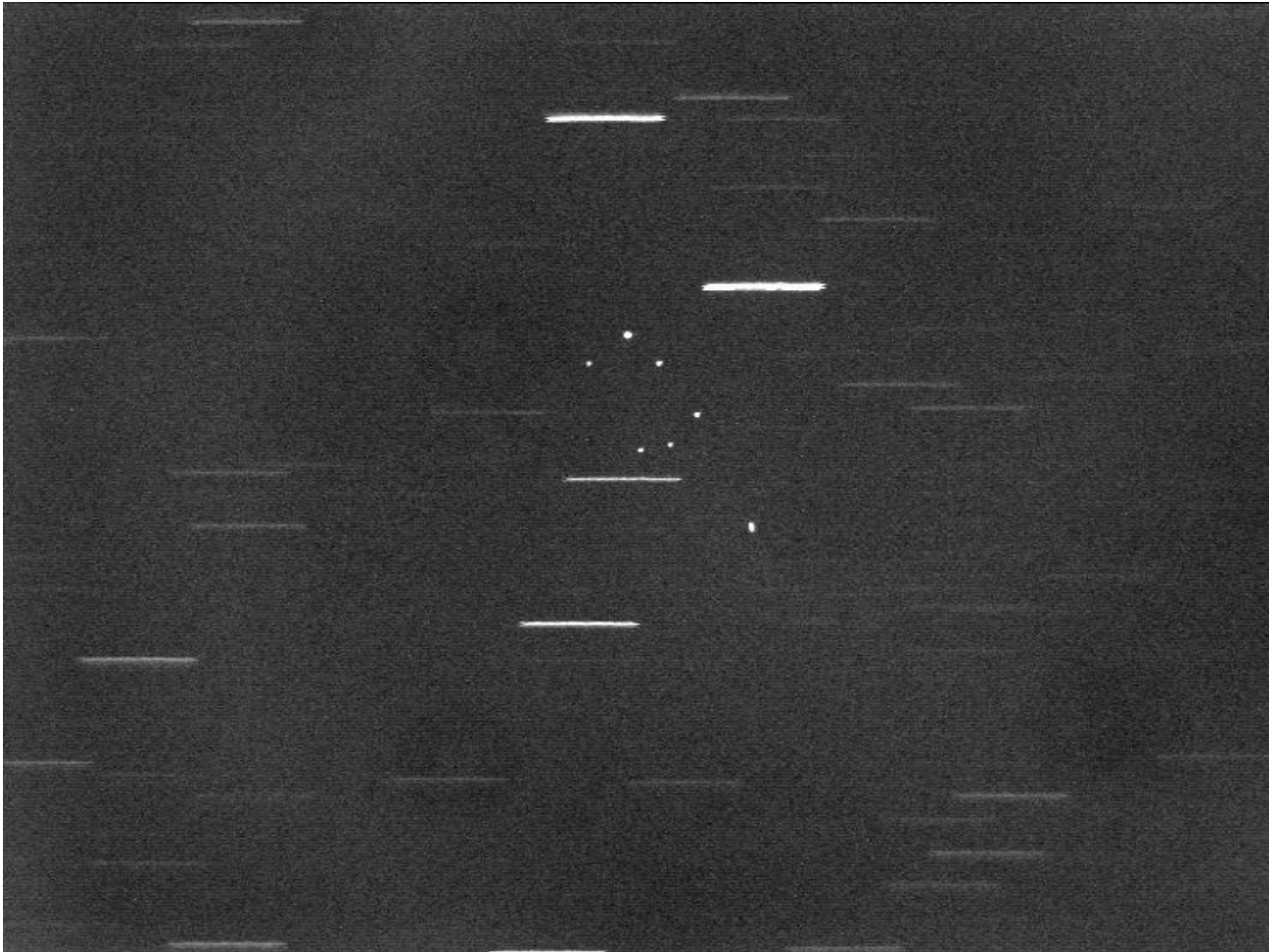
SSA in brief

Knowing all there is to know about objects in space

Fusing data on the space environment, human activities in space, and their interrelationships to create actionable information

- Metric Data (Catalog)
 - Locations of objects in space and the ability to predict where objects were in the past and will be in the future
- Space Weather
 - Measurement, warning, and forecasting of the effects of Solar activity on objects in orbit
- Object Status
 - Health, telemetry, planned maneuvers (usually provided by owner/operator)
- Intelligence
 - Information about objects in orbit (images, signals, capabilities, behavior) collected on objects in orbit

Metric data (observations)



ASTRA cluster tracked by South African hobbyist

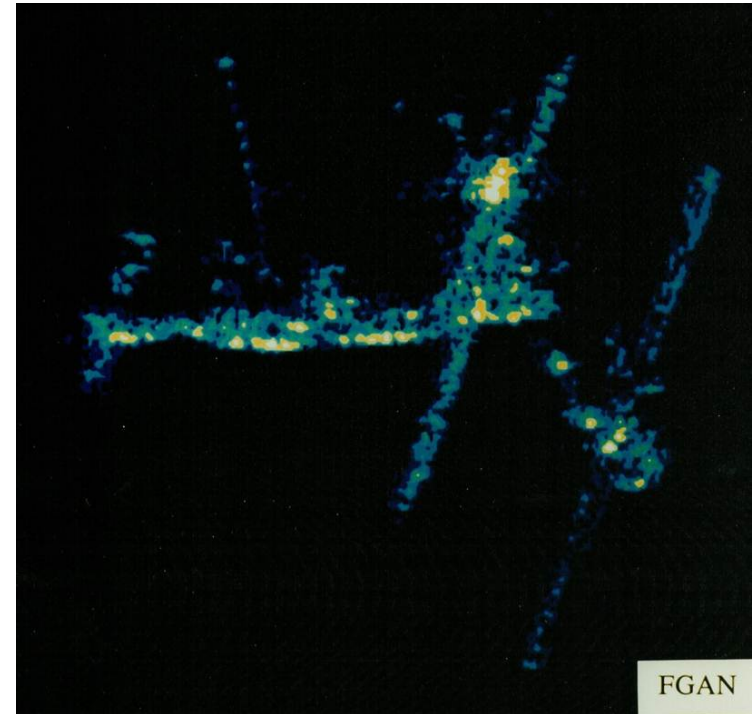
Optical and radar imagery

ISS and Discovery (STS-133)
February 28th 2011 17:58UT

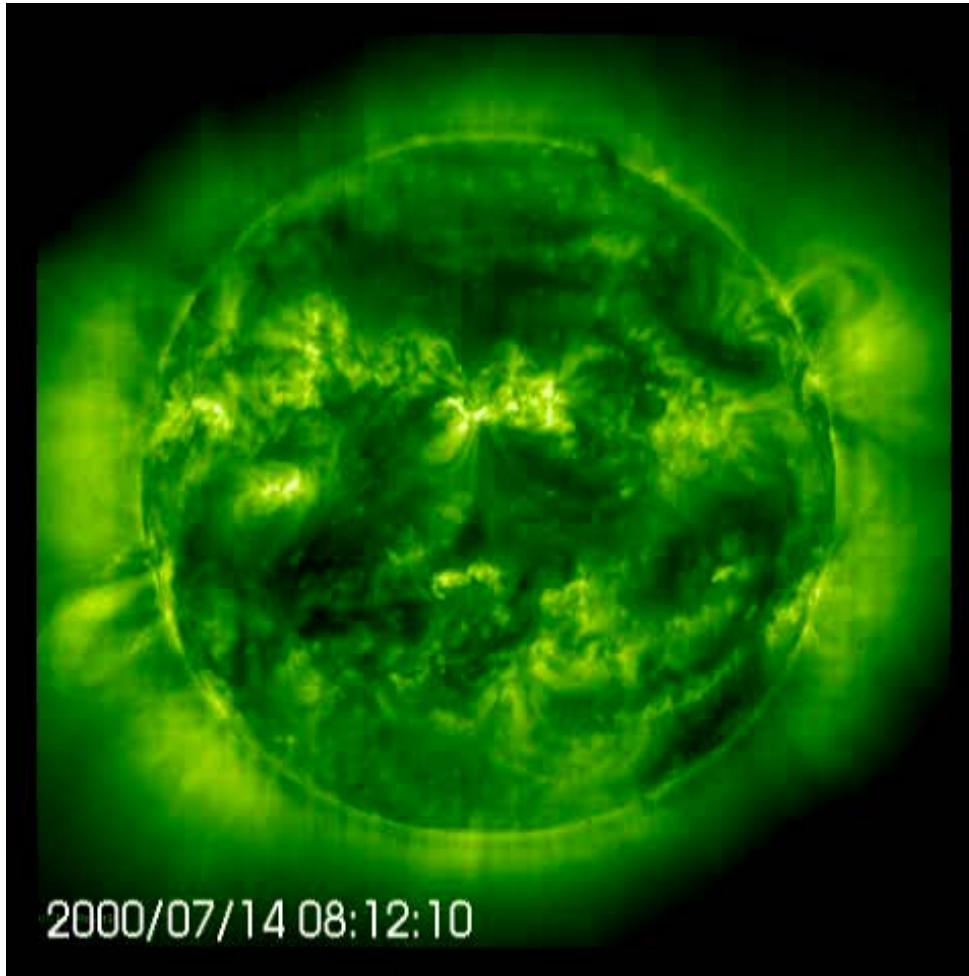
Acquisition and processing:
Thierry Legaut

Tracking system design and making:
Emmanuel Rietsch

ISS imaged by French hobbyist



MIR imaged by German
FGAN radar



Imagery of Coronal
Mass Ejection and
Particle Storm taken
by NASA's SOHO
satellite

Space situational awareness applications

- Predicting and preventing collisions on orbit
- Space traffic management
- Diagnosing spacecraft failures and malfunctions
- Calculating the risk to spacecraft due to environmental threats
- Detecting launches of new space objects
- Predicting atmospheric re-entry of space objects
- Monitoring behavior of spacecraft
- Detecting threats and attacks on spacecraft

Important considerations for SSA

- It is impossible for a single entity to achieve “good” SSA by themselves
- Fundamentally, SSA requires data sharing and cooperation between different actors
 - Networks of telescopes and radars distributed around the globe to track debris
 - Satellite owner/operators with telemetry, health, and planned maneuvers
- Multiple independent sources of SSA data are good
 - Greater accuracy and redundancy
 - Independent monitoring and validation



Promoting Cooperative Solutions for Space Sustainability

Thank you. Questions?

bweeden@swfound.org

©2011 Secure World Foundation. Used with Permission